

# ARTCC ARGENTINO AD 2.SAWE

**NO VALIDO PARA NAVEGACION REAL. ADAPTADO PARA SU UTILIZACION EN UN AMBITO VIRTUAL**  
**SAWE – RIO GRANDE**

## AD 2.17 ESPACIO AEREO ATC

### Zona de Control:

- |                                     |                            |        |
|-------------------------------------|----------------------------|--------|
| 1. Designación:                     | Zona de Control Río Grande |        |
| 2. Límites verticales:              | <u>FL 035</u><br>GND       |        |
| 3. Clasificación del espacio aéreo: | C                          |        |
| 4. Distintivo de llamada:           | GRANDE TORRE               |        |
| 5. Altitud de transición:           | 3000 FT.                   |        |
| 6. Nivel de transición:             | QNH de 977 a 994           | FL 050 |
|                                     | QNH de 995 a 1013          | FL 045 |
|                                     | QNH de 1014 a 1031         | FL 040 |
|                                     | QNH de 1032 a 1050         | FL 035 |

### Area de Control Terminal:

- |                                     |   |
|-------------------------------------|---|
| 1. Designación:                     | Area de Control Terminal Río Grande                             |
| 2. Límites verticales:              | <u>FL 450</u><br>2000 FT  |
| 3. Clasificación del espacio aéreo: | A: FL 450 / FL 195<br>B: FL 195 / FL 145<br>C: FL 145 / 2000 FT |
| 4. Distintivo de llamada:           | GRANDE TORRE  |

## AD 2.18 INSTALACIONES DE COMUNICACIONES ATS

SERVICIO	DISTINTIVO DE LLAMADA	FRECUENCIA	OBSERVACIONES
APP	Grande Torre	118.300	-

## AD 2.19 CARTAS AERONAUTICAS

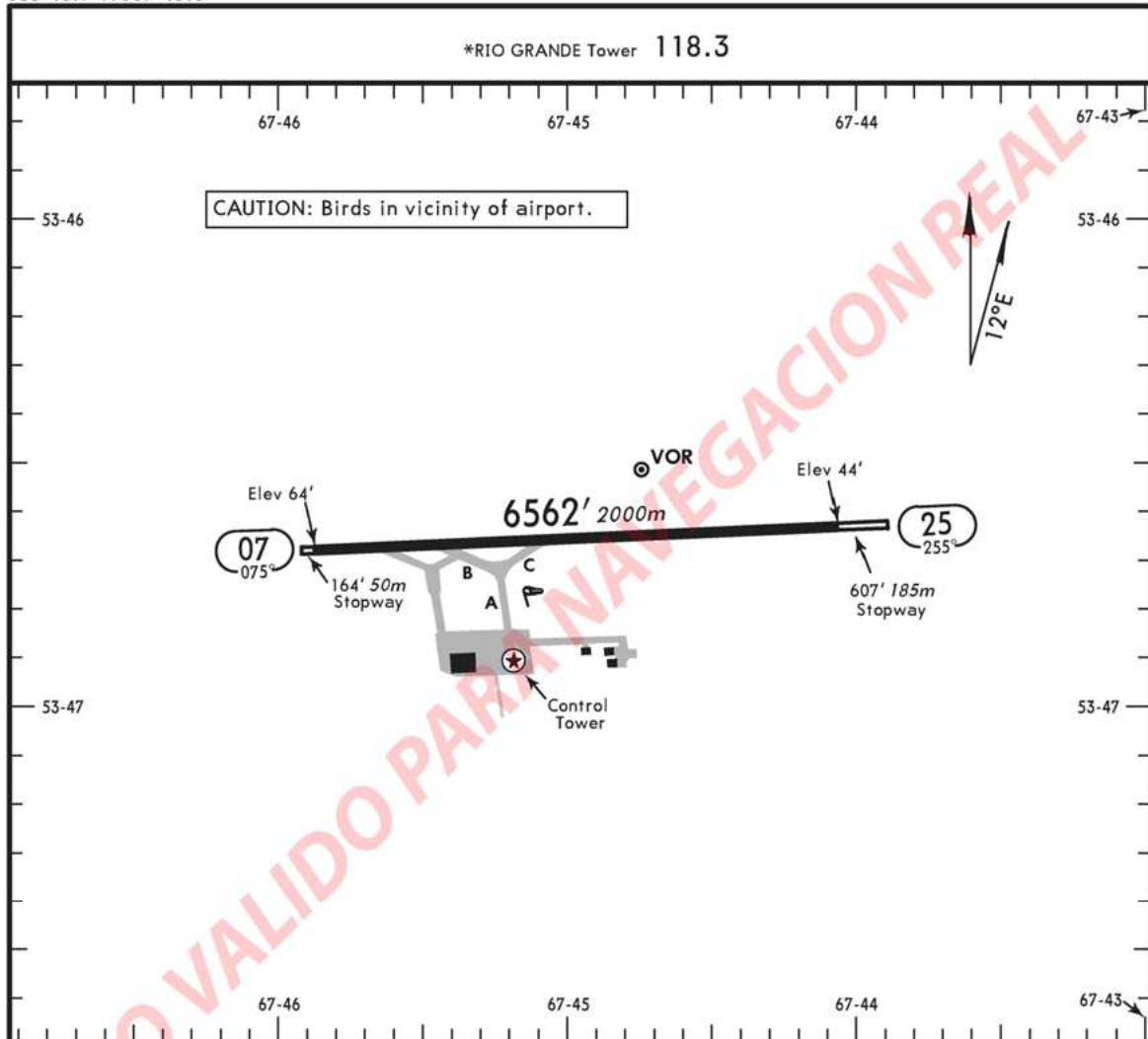
- |                       |                      |
|-----------------------|----------------------|
| - Plano de aeródromo: | SAWE.APT             |
| - Cartas IAC:         | SAWE.IAC NO.1 RWY 25 |
|                       | SAWE.IAC NO.2 RWY 25 |
|                       | SAWE.IAC NO.3 RWY 25 |
|                       | SAWE.IAC NO.4 RWY 25 |
|                       | SAWE.IAC NO.5 RWY 25 |
|                       | SAWE.IAC NO.6 RWY 25 |
|                       | SAWE.IAC NO.7 RWY 25 |
|                       | SAWE.IAC NO.8 RWY 07 |
|                       | SAWE.IAC NO.9 RWY 07 |
| - Cartas SID:         | SAWE.SID GEDAB       |

(DEJADO EN BLANCO INTENCIONALMENTE)

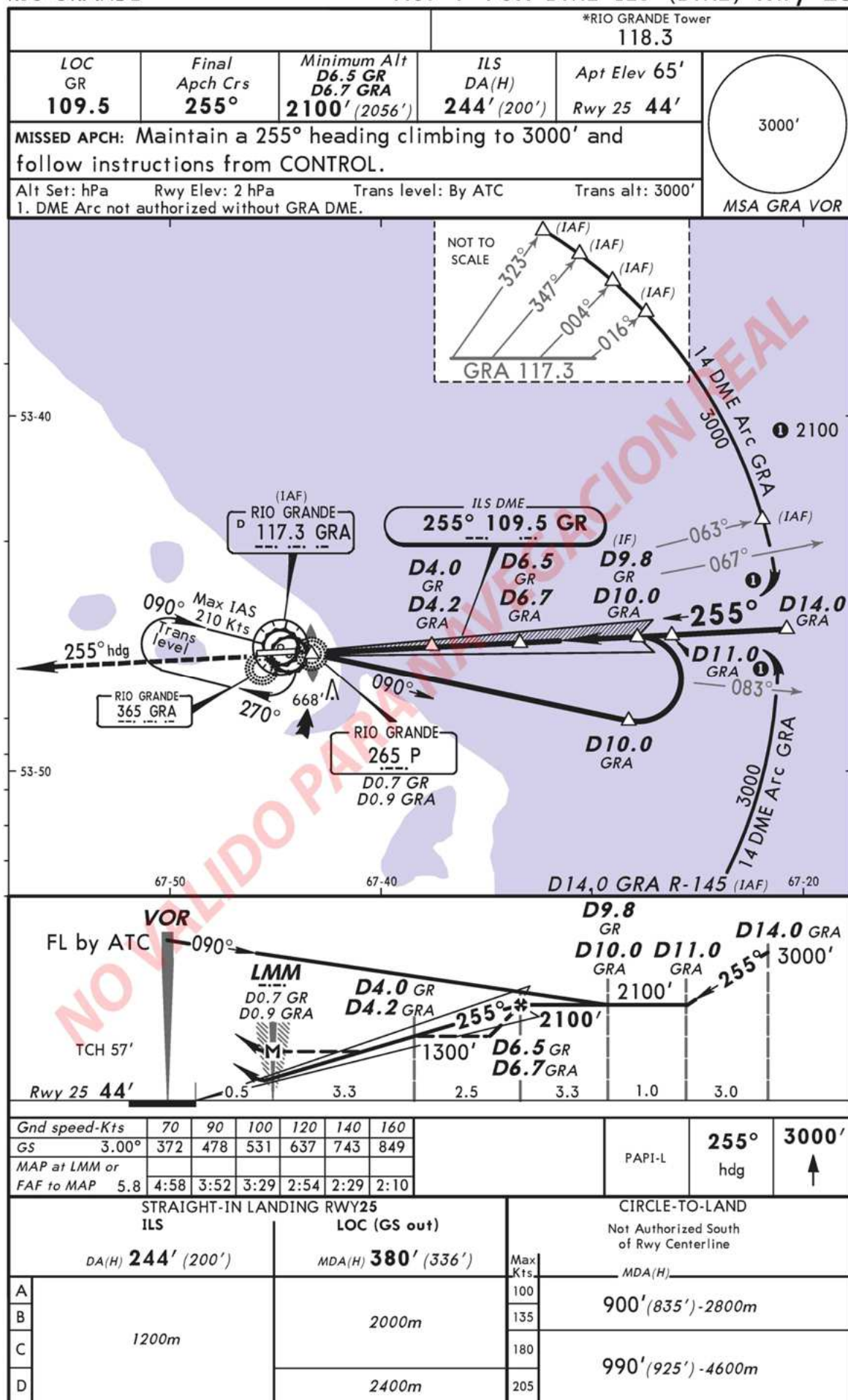
APT

SAWE  
Apt Elev 65'  
S53 46.7 W067 45.0

RIO GRANDE, ARGENTINA  
RIO GRANDE



ADDITIONAL RUNWAY INFORMATION					
RWY			USABLE LENGTHS		WIDTH
			LANDING	BEYOND	
			Threshold	Glide Slope	TAKE-OFF
07	25	RL PAPI-L (angle 3.0°)		5477' 1669m	

SAWE  
RIO GRANDERIO GRANDE, ARGENTINA  
No. 1 VOR DME ILS (DME) Rwy 25

IAC NO.2 RWY 25

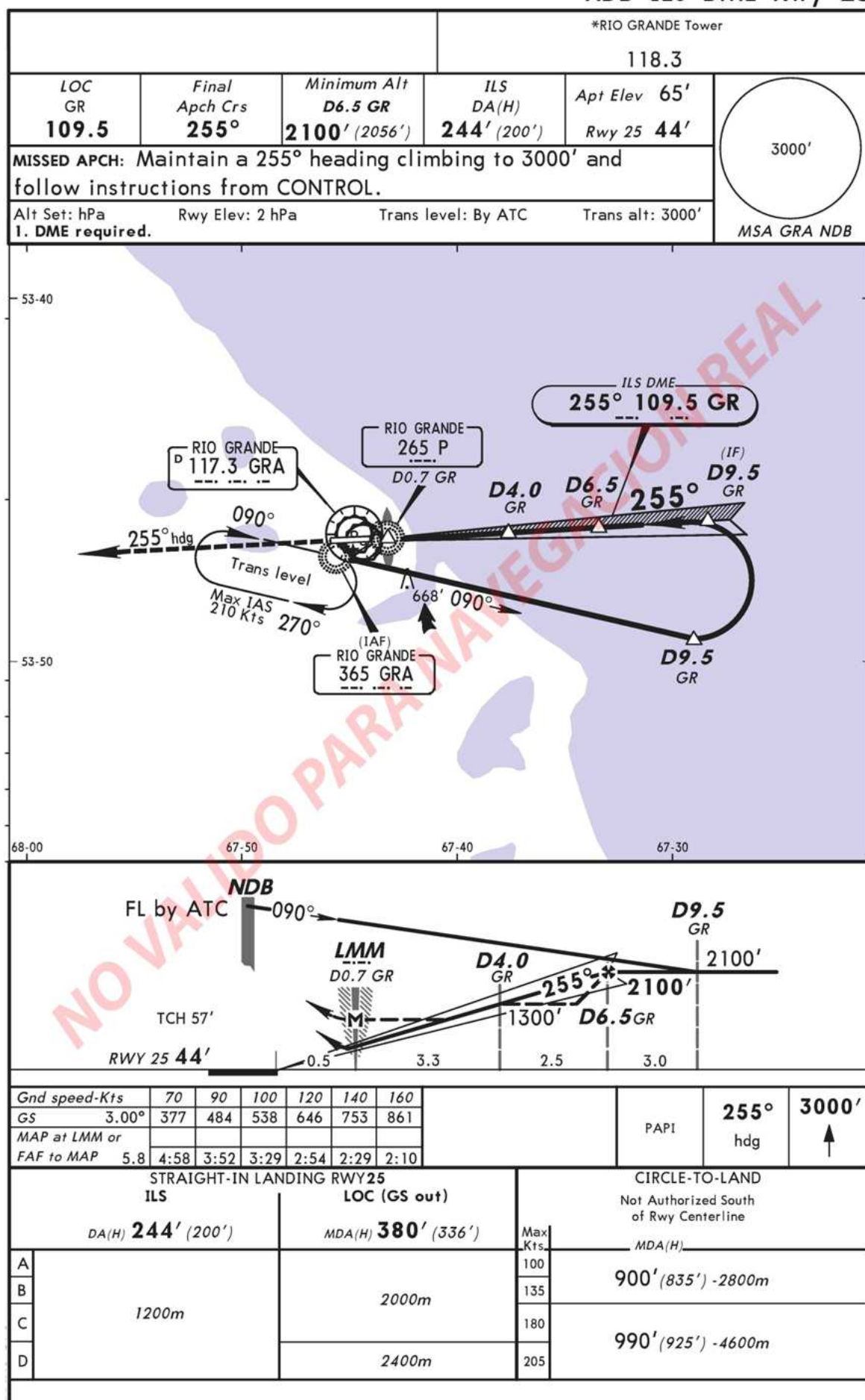
SAWE

RIO GRANDE, ARGENTINA

RIO GRANDE

No. 2

NDB ILS DME Rwy 25





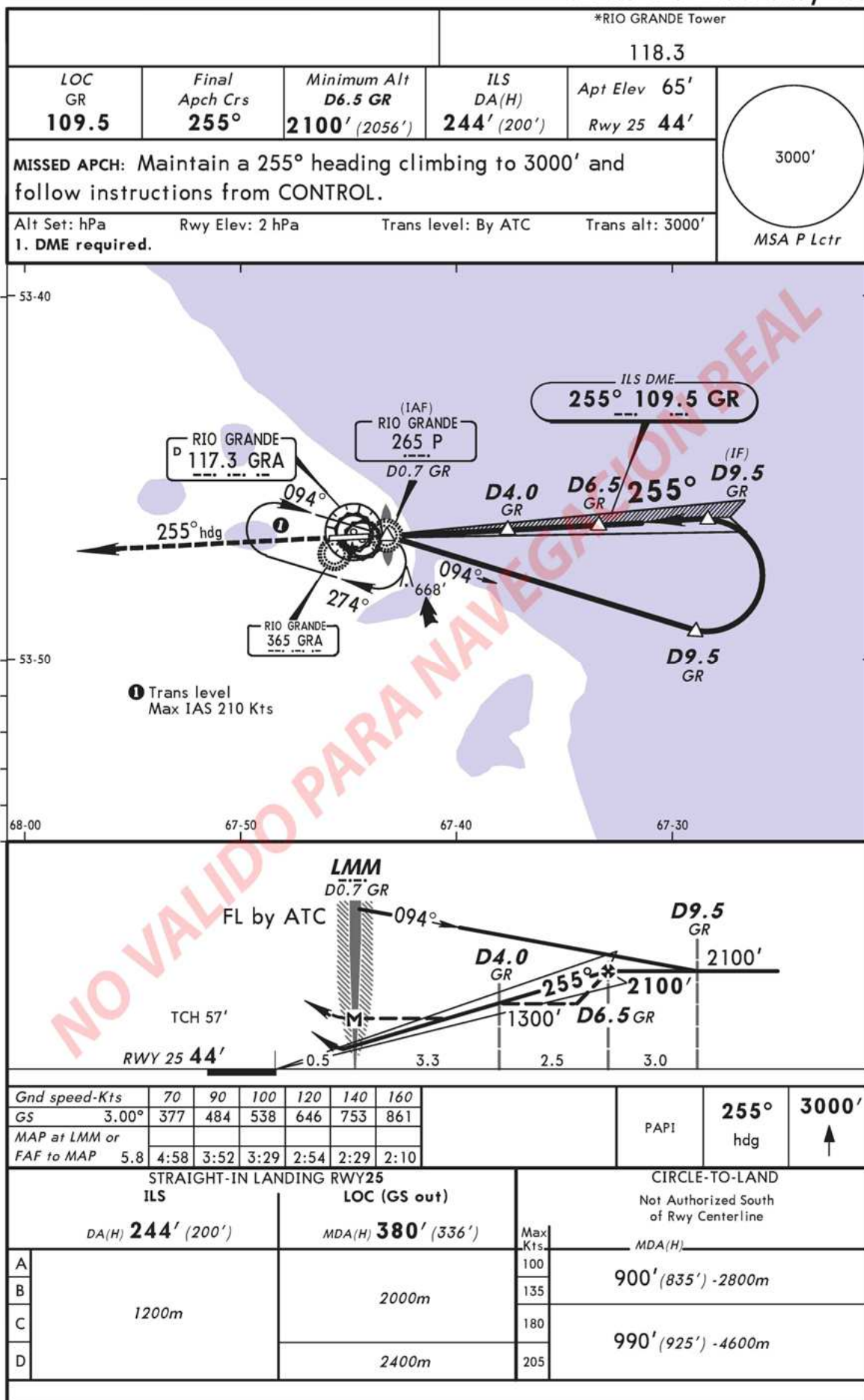
SAWE

RIO GRANDE, ARGENTINA

RIO GRANDE

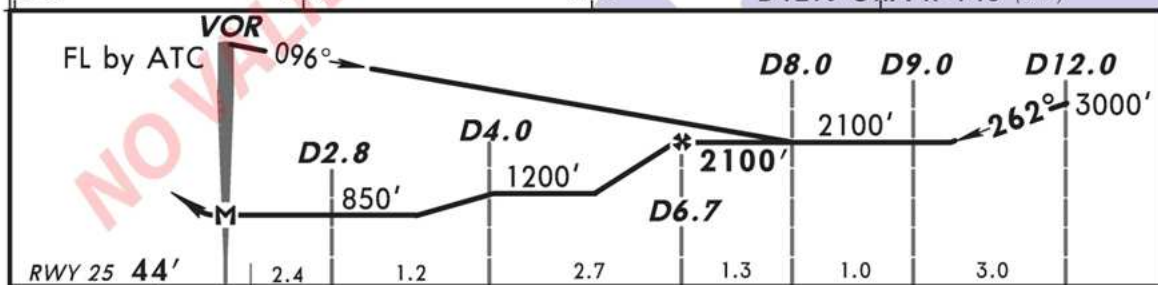
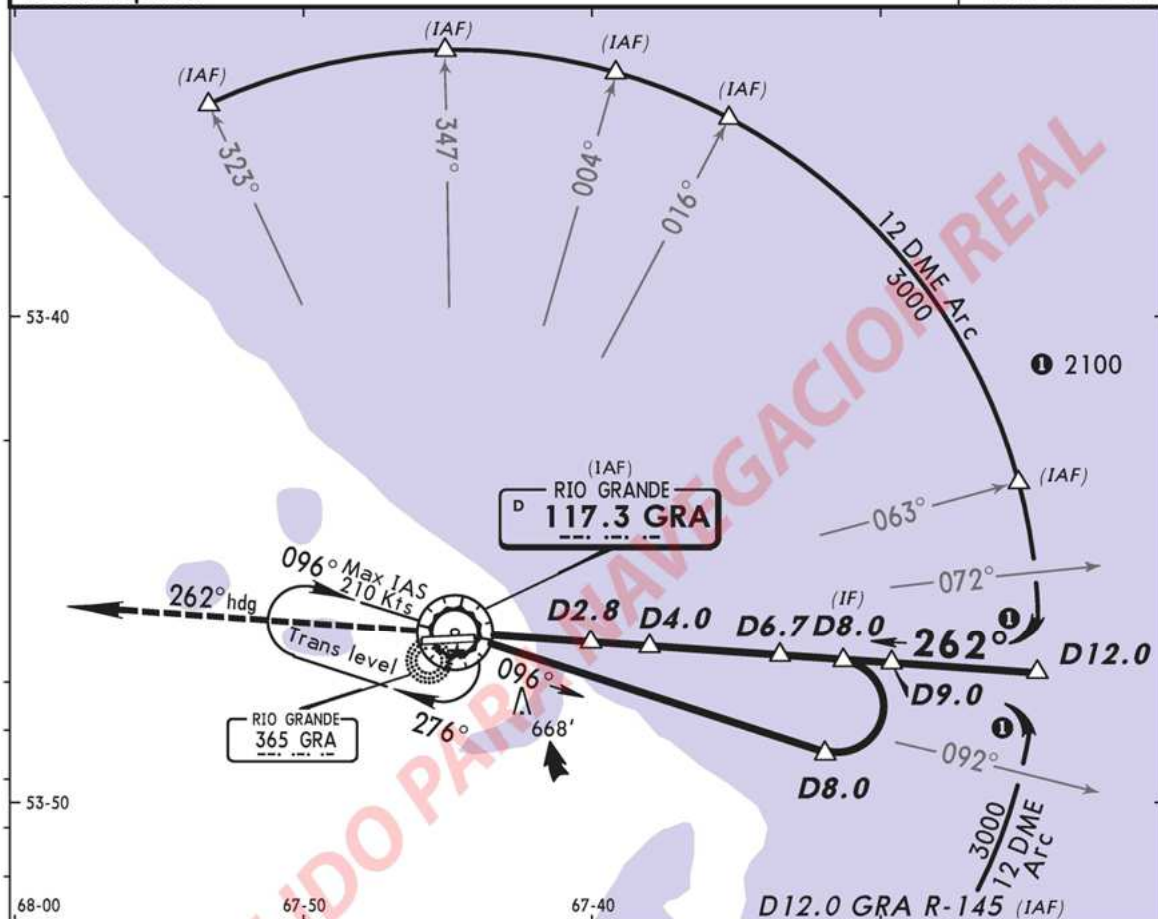
No. 3

LCTR ILS DME Rwy 25



SAWE  
RIO GRANDERIO GRANDE, ARGENTINA  
No. 4 VOR DME Rwy 25

				*RIO GRANDE Tower 118.3	
VOR GRA 117.3	Final Apch Crs 262°	Minimum Alt D6.7 2100' (2056')	MDA(H) 850' (806')	Apt Elev 65' Rwy 25 44'	<div>3000'</div> <div>MSA GRA VOR</div>
MISSED APCH: Maintain a 262° heading climbing to 3000' and follow instructions from CONTROL.					
Alt Set: hPa      Rwy Elev: 2 hPa      Trans level: By ATC      Trans alt: 3000'					
1. DME required.					

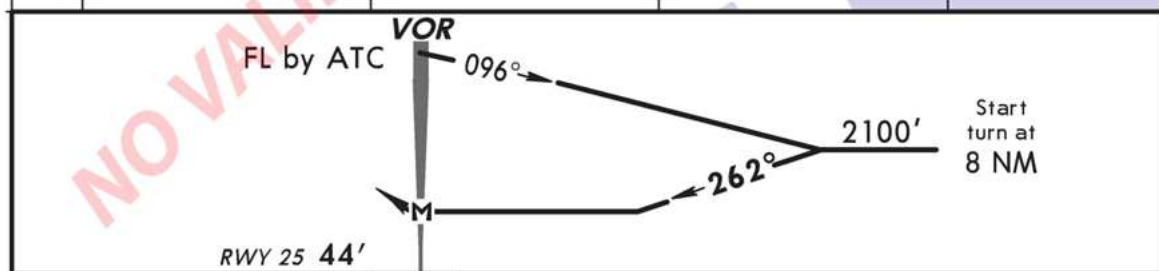
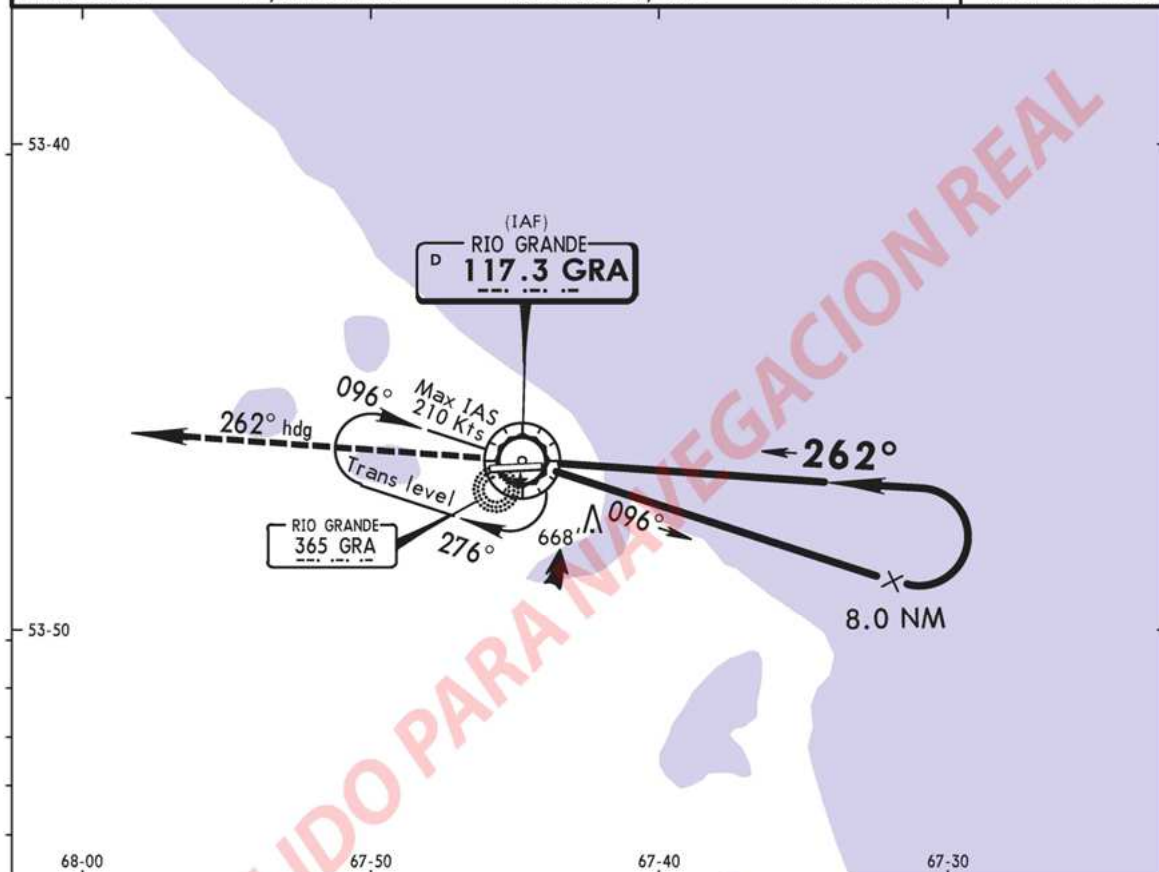


				PAPI	262° hdg	3000' ↑
MAP at VOR						

STRAIGHT-IN LANDING RWY25			CIRCLE-TO-LAND		
MDA(H) <b>850'</b> (806')			Not Authorized South of Rwy Centerline		
A	2000m	Max Kts 100	MDA(H)		
B	2400m	135	900' (835') - 2800m		
C	4000m	180	990' (925') - 4600m		
D	4400m	205			

SAWE  
RIO GRANDERIO GRANDE, ARGENTINA  
No. 5 VOR Rwy 25

				*RIO GRANDE Tower	
				118.3	
VOR GRA 117.3	Final Apch Crs 262°	No FAF	MDA(H) 900' (856')	Apt Elev 65' Rwy 25 44'	<div>3000'</div> <div>MSA GRA VOR</div>
MISSED APCH: Maintain a 262° heading climbing to 3000' and follow instructions from CONTROL.					
Alt Set: hPa		Rwy Elev: 2 hPa	Trans level: By ATC	Trans alt: 3000'	



Gnd speed-Kts	70	90	100	120	140	160			
Descent Gradient 4.3%	305	392	435	523	610	697			
MAP at VOR							PAPI	262° hdg	3000' ↑
STRAIGHT-IN LANDING RWY25							CIRCLE-TO-LAND		
MDA(H) <b>900'</b> (856')							Not Authorized South of Rwy Centerline		
A	2000m					Max Kts	MDA(H)		
B	2400m					100	900' (835') - 2800m		
C	4400m					135			
D	4800m					180			
						205	990' (925') - 4800m		

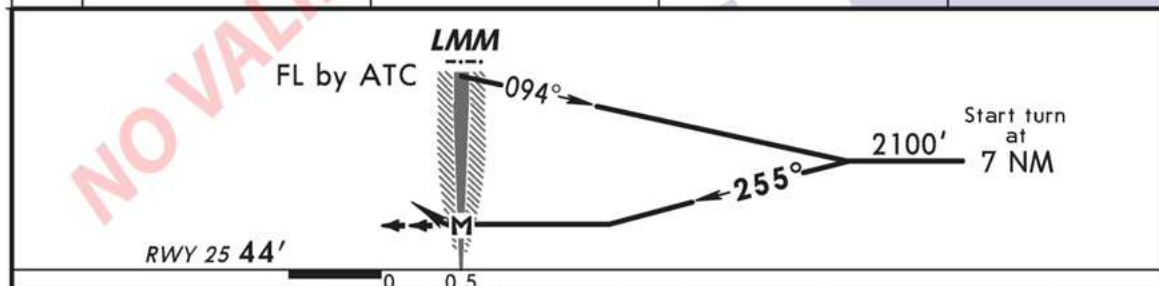
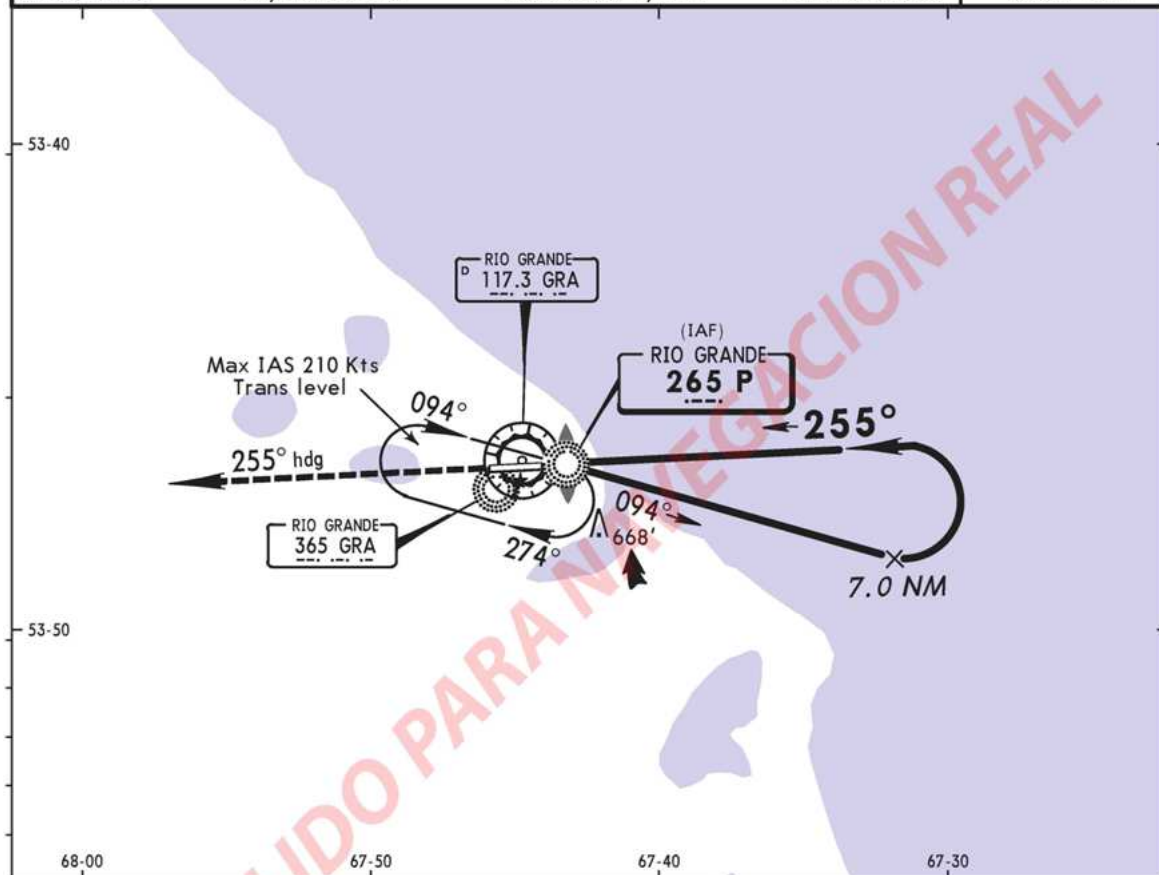
RIO GRANDE, ARGENTINA  
No. 6 NDB Rwy 25

STRAIGHT-IN LANDING RWY25			CIRCLE-TO-LAND	
MDA(H) <b>900'</b> (856')			Max Kts.	Not Authorized South of Rwy Centerline
A	2000m		100	MDA(H) <b>900'</b> (835')-2800m
B	2400m		135	
C	4400m		180	<b>990'</b> (925')-4800m
D	4800m		205	



SAWE  
RIO GRANDERIO GRANDE, ARGENTINA  
No. 7 LCTR Rwy 25

				*RIO GRANDE Tower	
				118.3	
Lctr P 265	Final Apch Crs 255°	No FAF	MDA(H) 900' (856')	Apt Elev 65' Rwy 25 44'	<div>3000'</div> <div>MSA P Lctr</div>
MISSED APCH: Maintain a 255° heading climbing to 3000' and follow instructions from CONTROL.					
Alt Set: hPa		Rwy Elev: 2 hPa	Trans level: By ATC	Trans alt: 3000'	



Gnd speed-Kts		70	90	100	120	140	160		PAPI	3000' ↑	255° hdg
Descent Gradient 4.4%		312	401	446	535	624	713				
MAP at LMM											
STRAIGHT-IN LANDING RWY25								CIRCLE-TO-LAND			
MDA(H) 900' (856')								Not Authorized South of Rwy Centerline			
							Max Kts	MDA(H)			
A		2000m					100	900' (835') - 2800m			
B		2400m					135				
C		4400m					180	990' (925') - 4800m			
D		4800m					205				

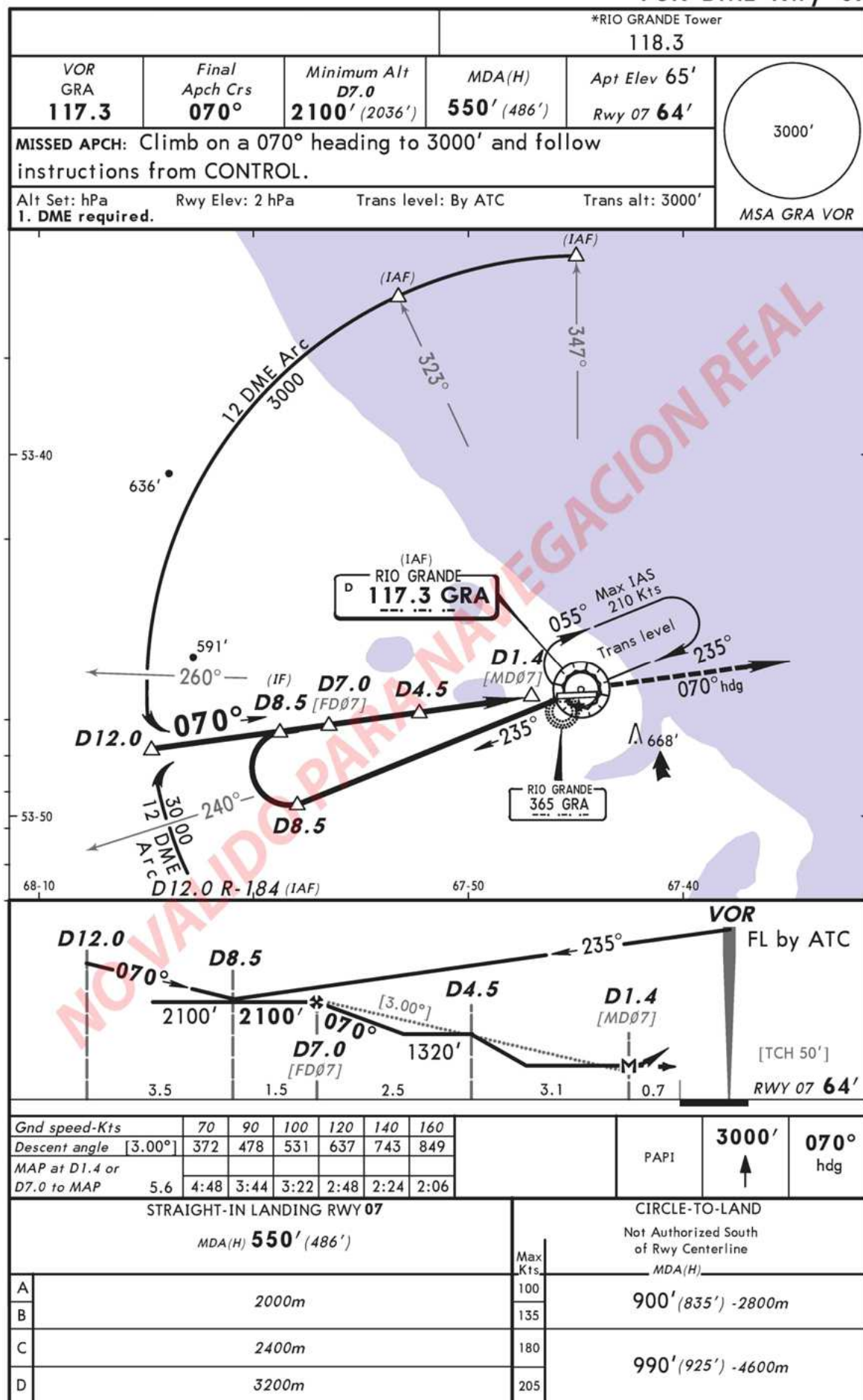
SAWE

RIO GRANDE, ARGENTINA

RIO GRANDE

No. 8

VOR DME Rwy 07



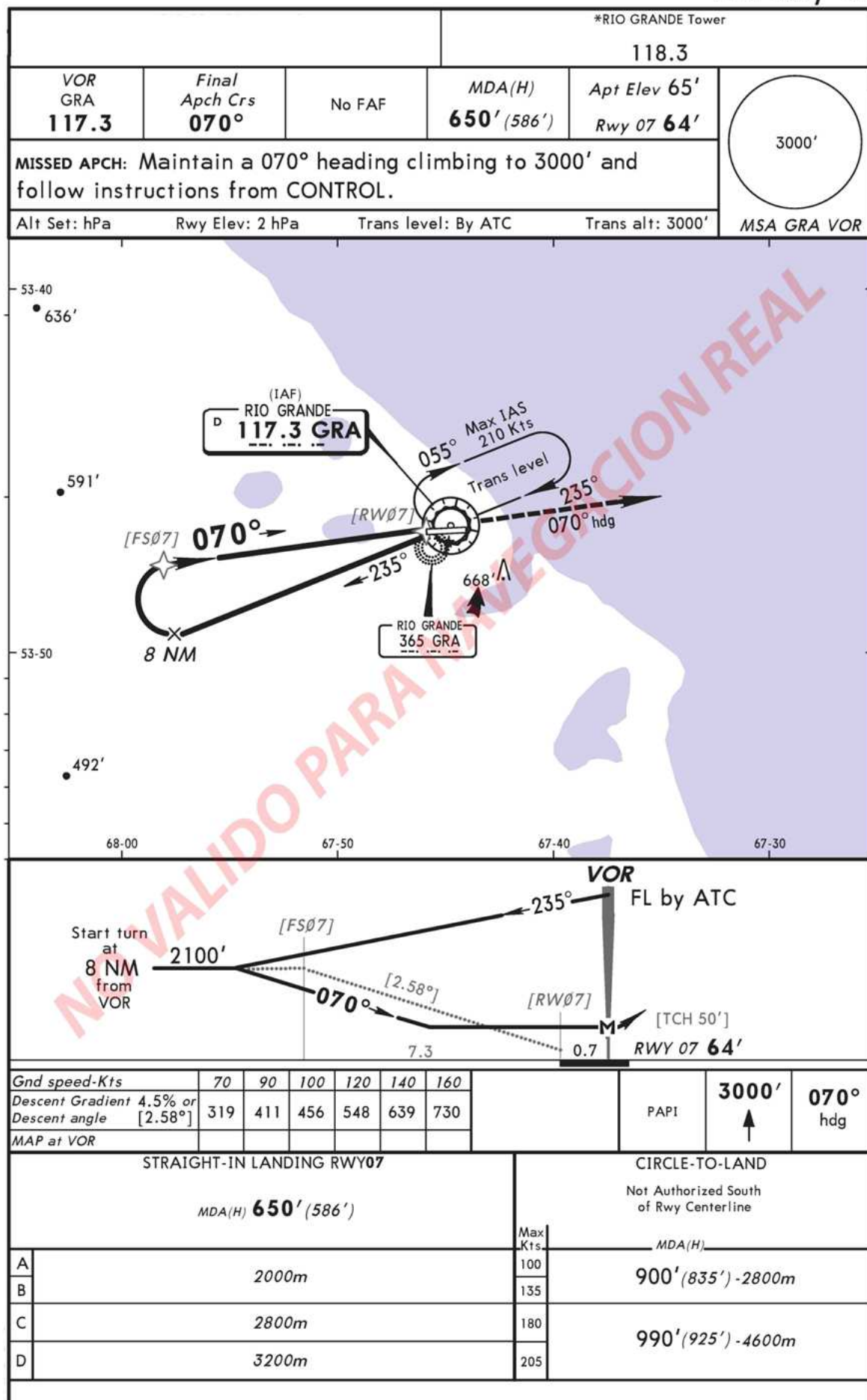
SAWE

RIO GRANDE, ARGENTINA

RIO GRANDE

No. 9

VOR Rwy 07



# SID GEDAB

SAWE  
RIO GRANDE

RIO GRANDE, ARGENTINA

SID

Apt Elev  
65'

Trans level: By ATC Trans alt: 3000'

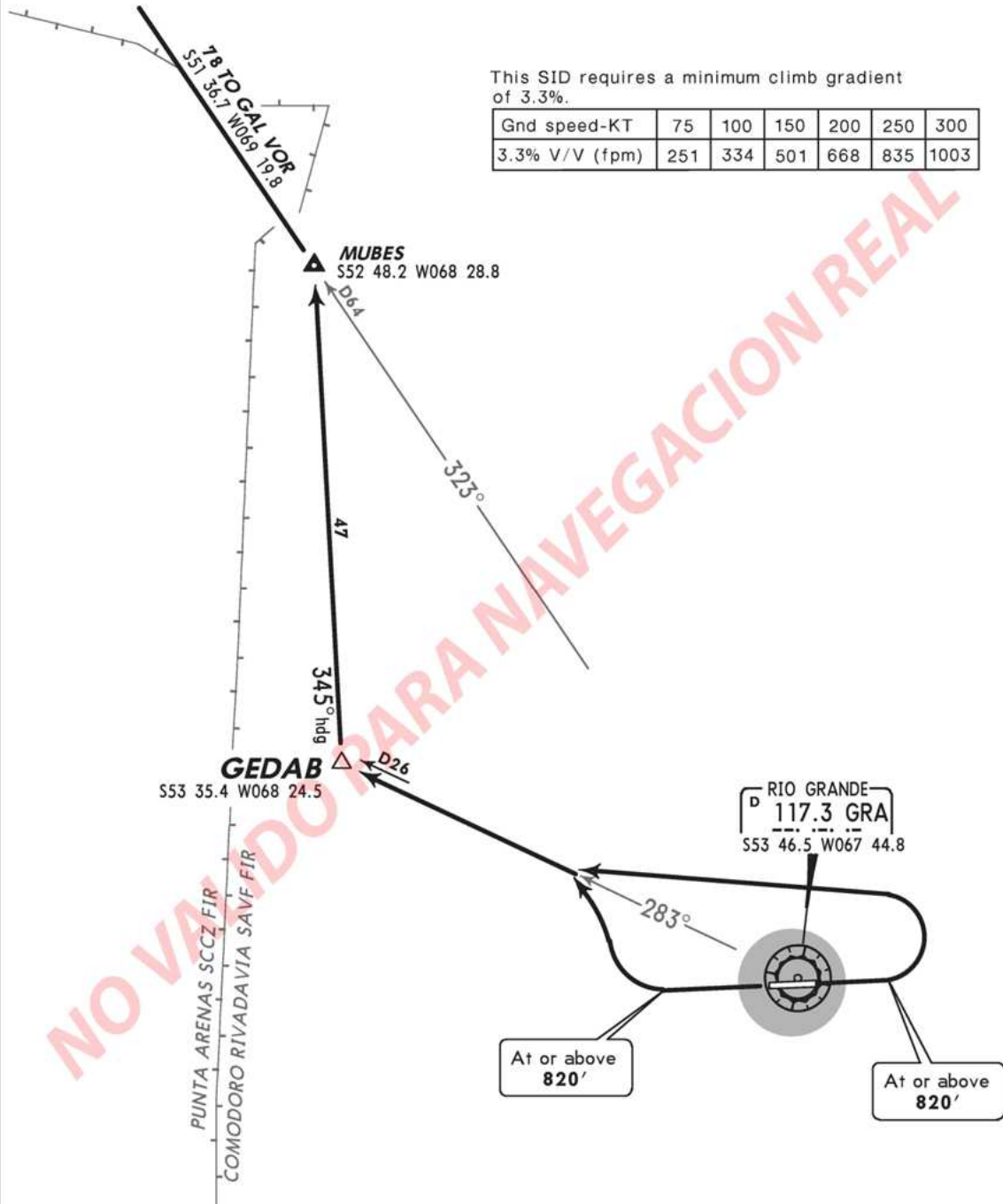
## GEDAB DEPARTURE

3000'

MSA GRA VOR

This SID requires a minimum climb gradient of 3.3%.

Gnd speed-KT	75	100	150	200	250	300
3.3% V/V (fpm)	251	334	501	668	835	1003



RWY	INITIAL CLIMB
07	<b>MAINTAIN</b> runway heading until at or above 820'. Turn LEFT climbing to intercept GRA R-283.
25	<b>MAINTAIN</b> runway heading until at or above 820'. Turn RIGHT climbing to intercept GRA R-283.
ROUTING	
Continue outbound on GRA R-283 to GEDAB, then turn to a 345° heading to MUBES. Continue outbound on GRA R-323.	